

FLOOR PLAN.

4m ← 8m → 4m

Approx
22 m²

(X3) lights

Approx
22 m²

(X3) lights

Fluro lights
← X 3 →

SINK GAS
HOB

Metal Stud wall
G-YPAC

1206mm

DOUBLE DOORS

GRD
↓
COUNTER

Fluro
lights (X4)

1206mm

DOUBLE
DOORS

Fluro
lights (X4)

Approx
48 m²

Approx
36.6 m²

1.9m

12m

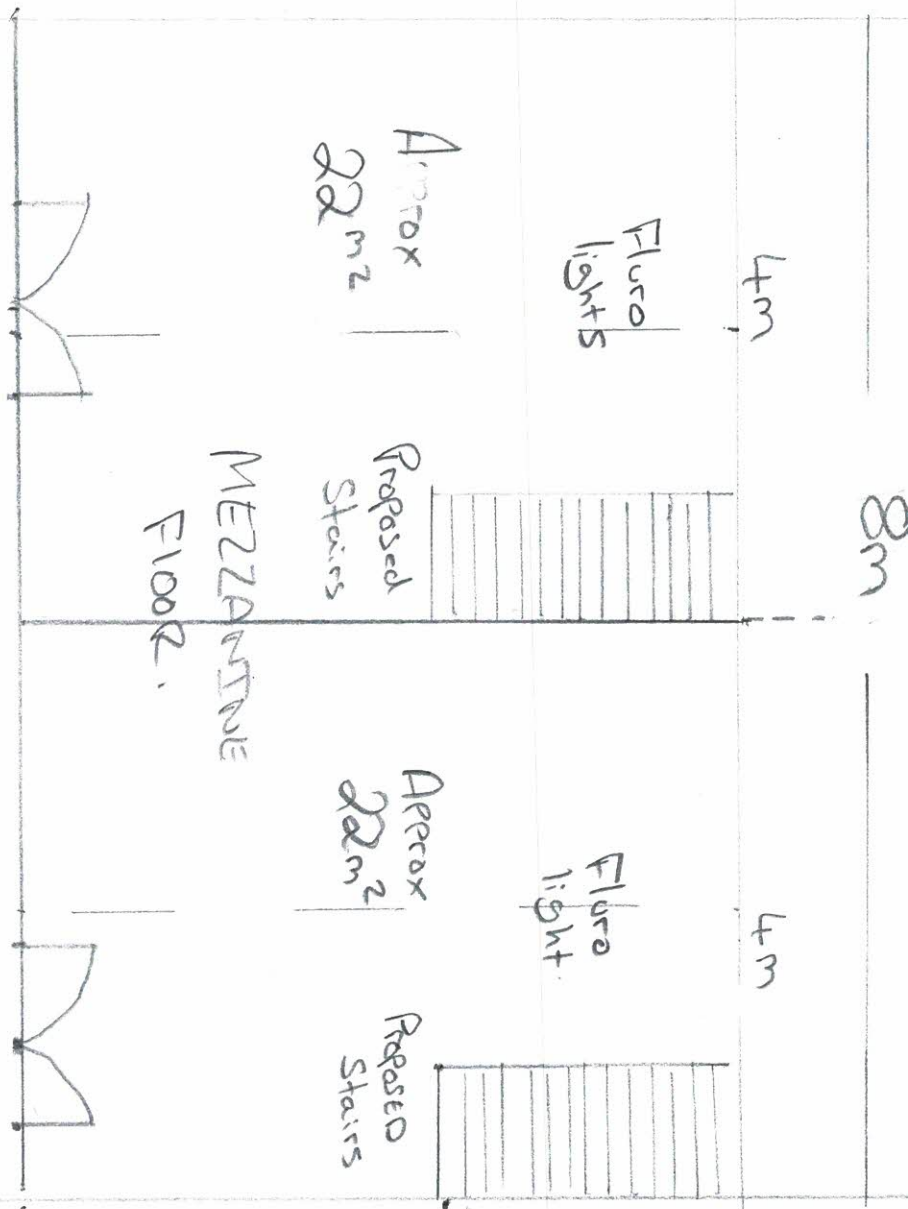
Shelving Approx 4m long x 300mm deep

COUNTER

(GPO) For
Box Till

PROPOSED TOP FLOOR.

5.5



TOTAL 59 m² FOR

MEZZANINE FLOOR.

44 59 m²

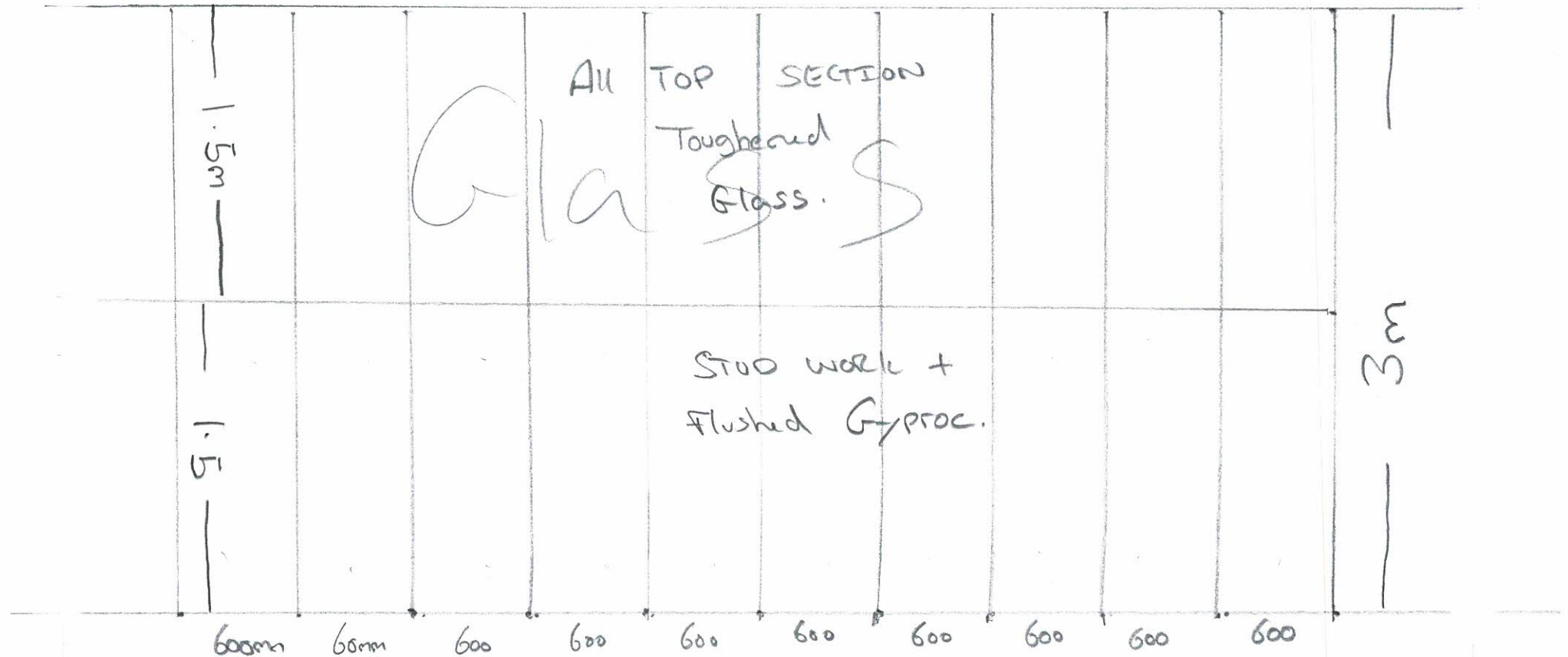
3m heigh from Slab level.

PROPOSED DIVIDING METAL STUD WALL.

SIDE VIEW.

12m long: x 3m^H

Ceiling Height 3m Approx.



PROPOSED FRONTAGE

W 9

DIVIDING
WALL
UPSTAIRS.

MEZZANINE FLOOR.

3m high.

3m

8m